

Durata: ca 11 min.

Nevrištec

per Quartetto d'Archi

Peter Swinnen

2006

Moderato ♩ = 80

suoni reali

Viola (*) *col legno tratto*

scordatura

4

9

13

17

II^a

(*) The dynamics are indicated by the size of the notes: the bigger the notehead, the louder it should be played.

21

25

IIª
IIIª

28

IIIª

31

IVª

35

II^a

38

41

III^a

44

IV^a II^a III^a

47

I^a II^a

51

arco sul tasto L.H. half stopped

II^a III^a

55

II^a IV^a

59

III^a

64

II^a

68

III^a

71



75

II^a

79

II^a

84



89

L.H. ordinario
flautando

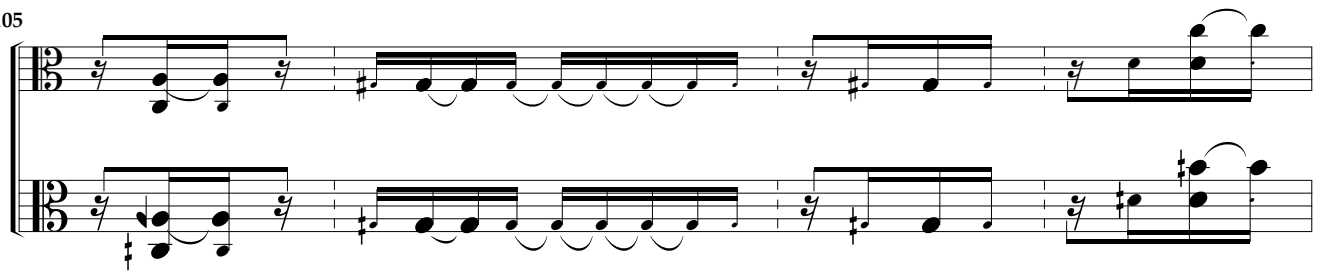
92

95

98

101

105



109



114

II^a

118



123

pizz. *L.H.* half stopped

IV^a

127

IV^a

132

137

141

III^a II^a III^a III^a

146

arco ordinario
senza sordino

IVª

IIª
IIIª

150

IIIª

IVª

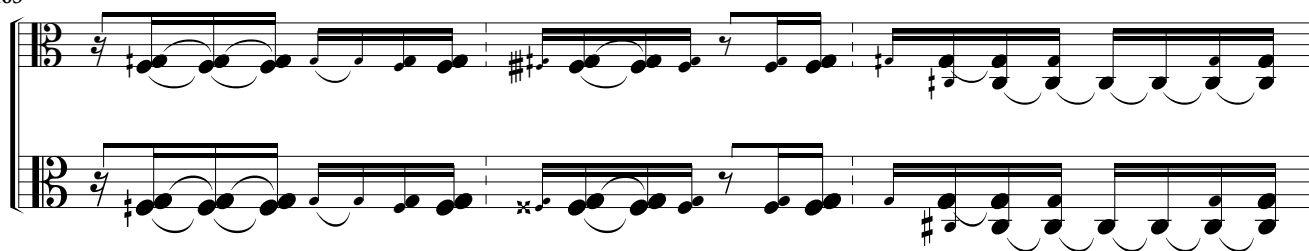
154

IIIª

157

161

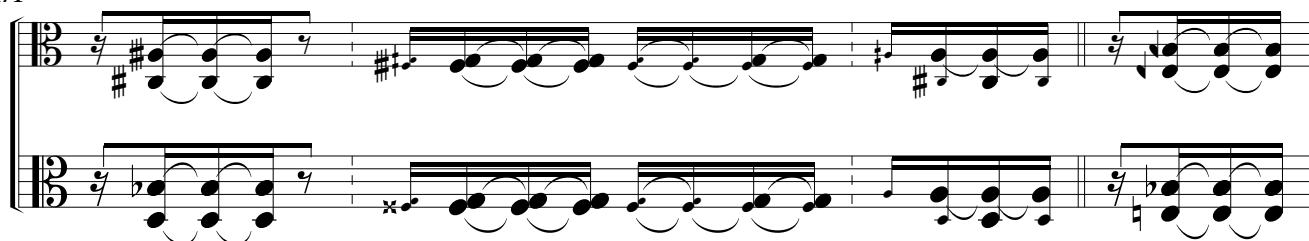
165



168



171



175



179



183



188



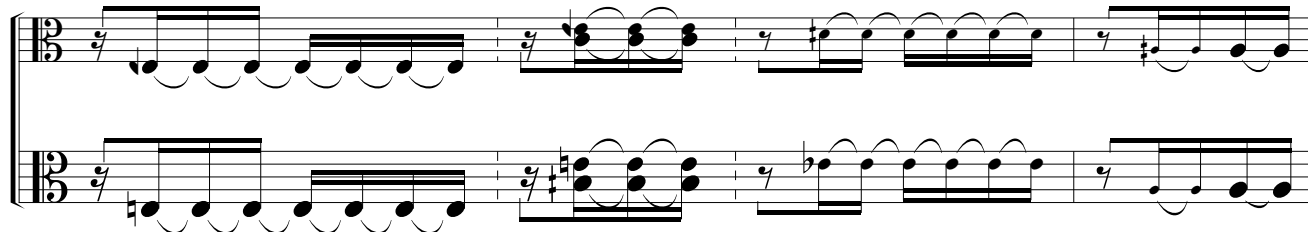
192



195



198



202



206

Allegro Vivace ♩ = 160



208

IV^a III^a

212

IV^a

216

IV^a III^a III^a

221

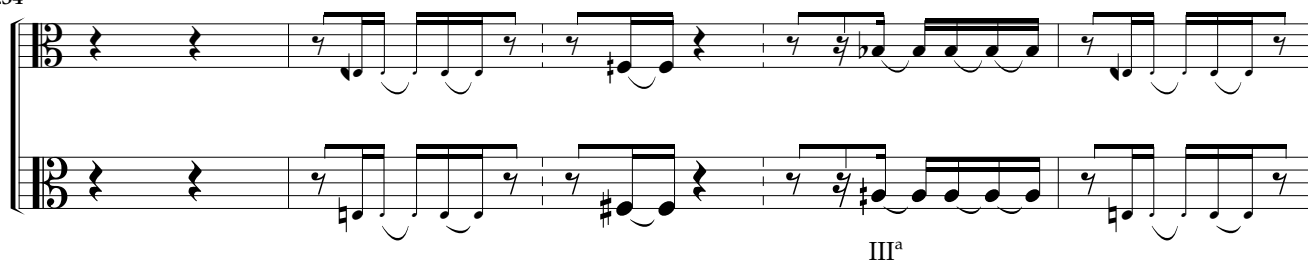
225

229

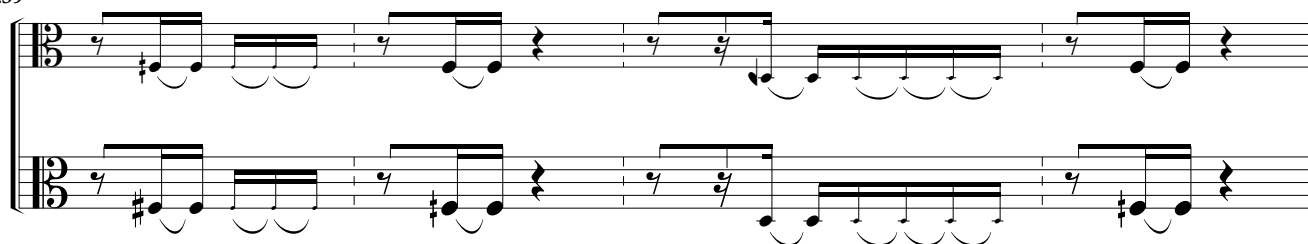
232



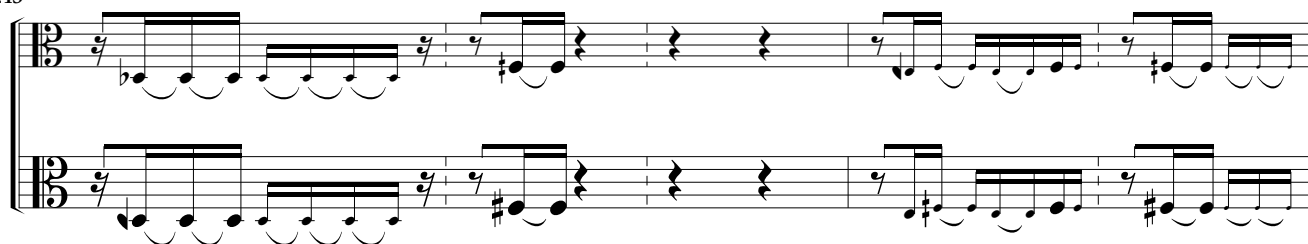
234



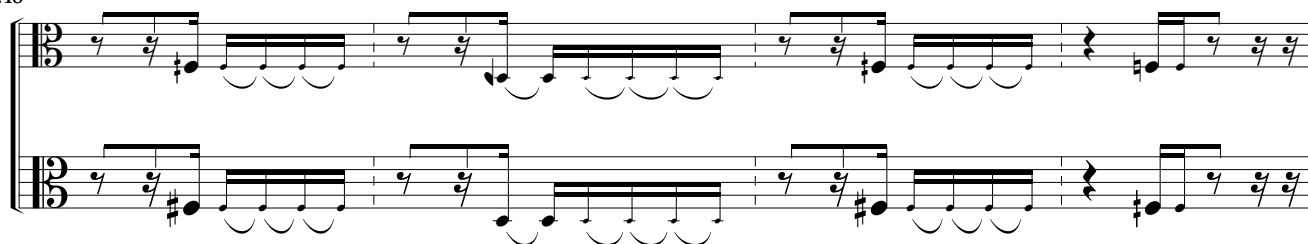
239



243



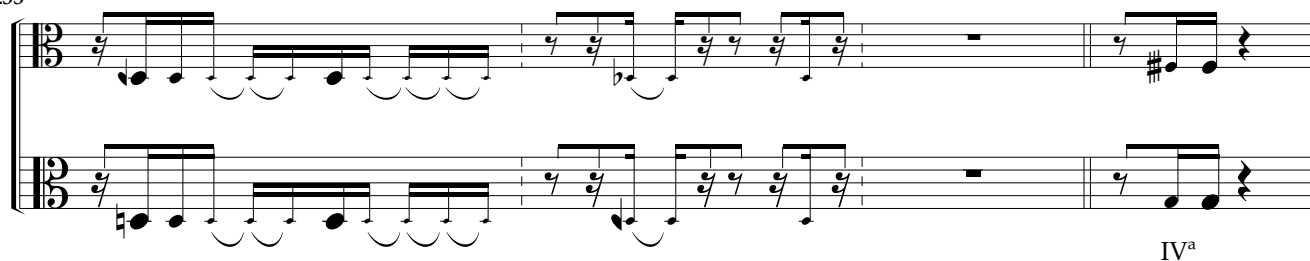
248



252



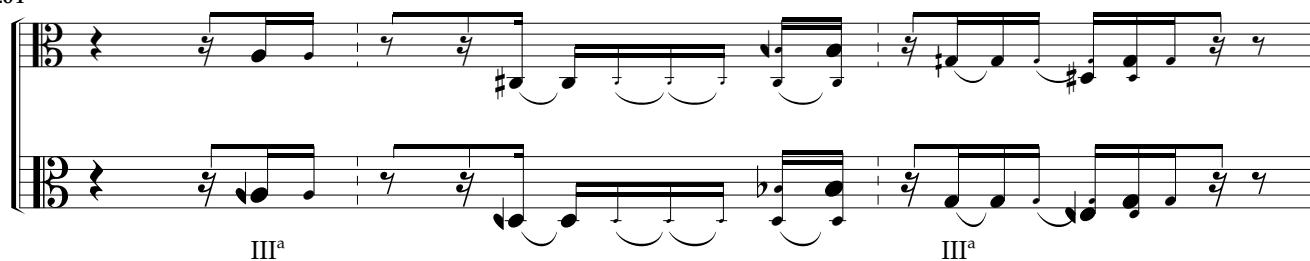
255



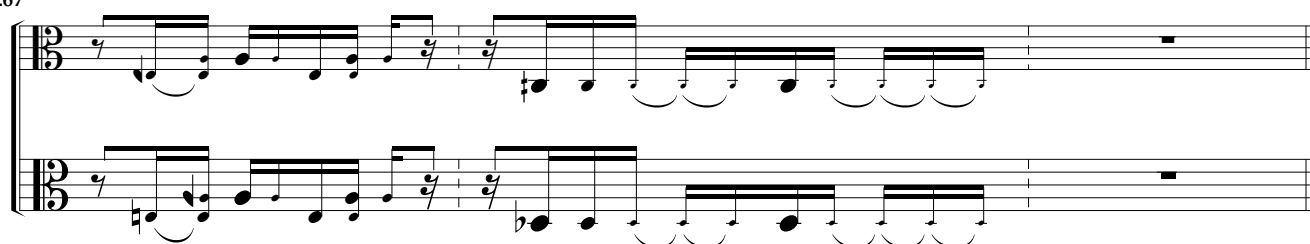
259



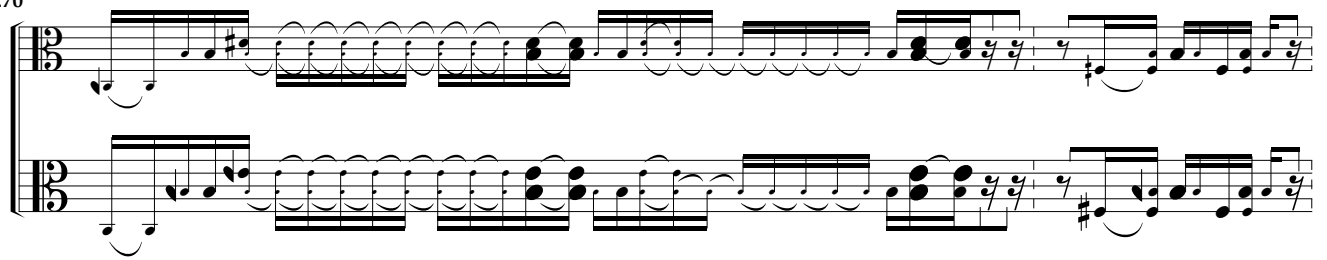
264



267



270



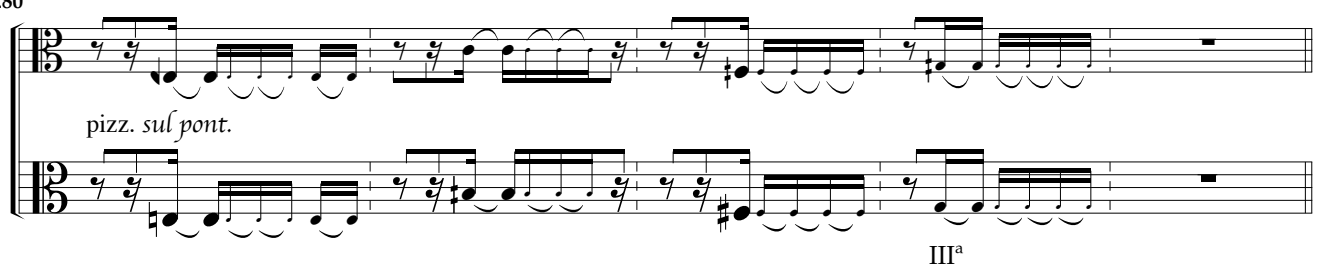
272



276



280



285

arco sul pont. I^a III^a

289

293

IV^a

297

III^a pizz. sul pont. pizz. sul pont.

301

304

307 **Andante** ♩ = 60

col legno battuto

310

313

IIIª

318

323

IIIª IIª IIIª

328

331

arco sul tasto L.H. half stopped

III^a IV^a

333

II^a

336

338

340

III^a II^a

342

344

II^a

346

349

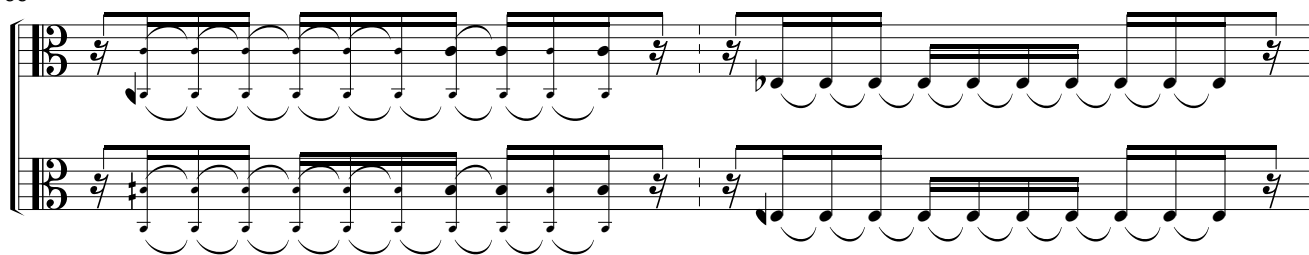
pizz. sul tasto

352

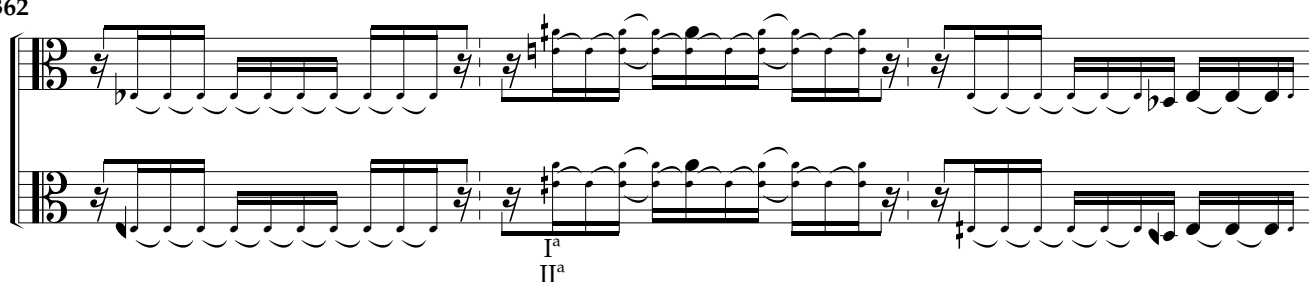
354

357

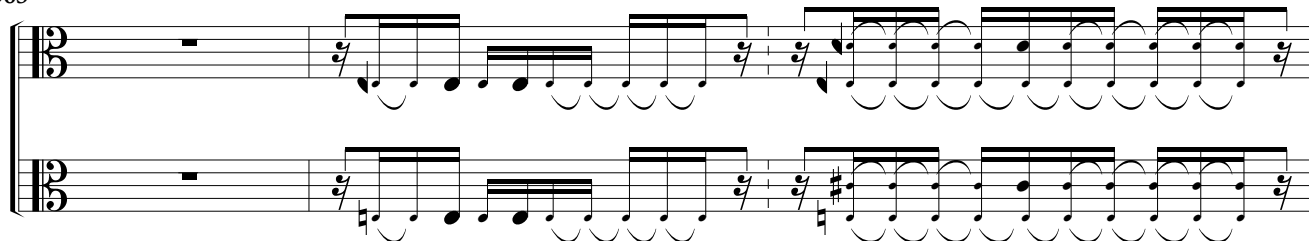
360



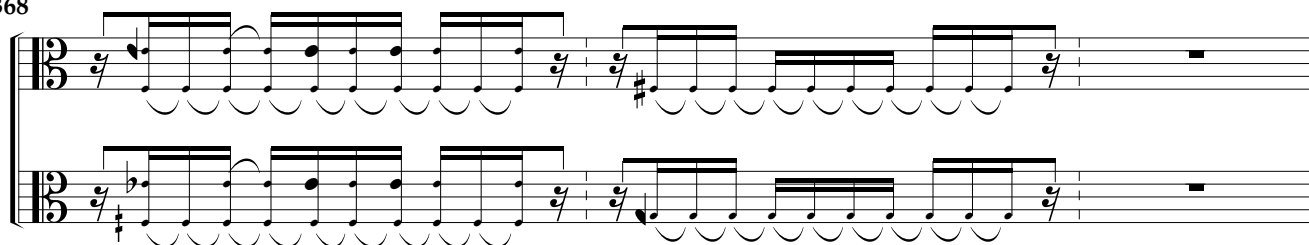
362



365



368



371



374

